

# ANNUAL REPORT 2025



# TABLE OF CONTENTS

<b>PRESIDENT'S MESSAGE</b>	<b>2</b>
<b>BOARD OF DIRECTORS</b>	<b>4</b>
<b>NLFA STAFF</b>	<b>5</b>
<b>MISSION, VISION &amp; VALUES</b>	<b>7</b>
<b>NL FEDERATION OF AGRICULTURE</b>	<b>8</b>
<b>AGRICARE NL</b>	<b>14</b>
<b>AGRICULTURE IN THE CLASSROOM NL</b>	<b>20</b>
<b>NL YOUNG FARMERS</b>	<b>26</b>
<b>NL LIVING LAB</b>	<b>33</b>
<b>ON FARM CLIMATE ACTION FUND</b>	<b>36</b>
<b>AWARDS</b>	<b>40</b>

# PRESIDENT'S MESSAGE

The past year was not an easy one for many farmers across Newfoundland and Labrador. Weather extremes, rising costs, and ongoing uncertainty made 2025 a challenging year on the ground. But if there's one thing this year reinforced, it's the resilience of our farming community. Even in difficult conditions, farmers continued to adapt, show up for one another, and look ahead with determination—and the Federation was proud to stand alongside them.



**Wayne Simmons**  
NLFA PRESIDENT

Supporting that work starts with people. This year, we welcomed several new staff members to the NLFA team, strengthening our ability to support farmers across the province. Christa Wright joined us as Industry Development Manager, and we built a dedicated team to support delivery of the Agriculture Climate Solutions (ACS) project, including Kelsey Cullihall as ACS Knowledge Technology Transfer Coordinator, Tyler Buckle as ACS Engagement Coordinator, Lisa White as the On Farm Climate Action Fund (OFCAF) Funding Coordinator and Krishna Kaja as OFCAF Technical Manager. Jennifer Canning also came on board as our Administrative and Outreach Assistant in the Programs Office, and James Grudic joined part-time as our Social Media Coordinator. With this expanded team, we're better equipped to take on new projects and respond to the needs of our members.

Bringing people together remained a priority throughout the year. Our Agriculture Industry Symposium, held at the Delta Hotel in St. John's, was another strong success, with excellent attendance, a growing trade show area, and increased engagement from sponsors and stakeholders. We also hosted several other successful events throughout the year, including the Agriculture Expos and Open Farm Day, which continue to connect farmers with the public and shine a light on local agriculture. Through our Community Connect events, we made a real effort to create more opportunities for in-person networking and meaningful conversation within the industry.

Advocacy work continued at both the provincial and national levels. Along with Vice President Andy Wright and former General Manager Colin Carroll, I participated in Canadian Federation of Agriculture meetings in Ottawa, where discussions focused on federal policy changes, trade issues, and their potential impacts on farmers. The NLFA remains actively engaged with CFA to ensure the voices of Newfoundland and Labrador farmers are represented at the national table. I also attended lobby week in Ottawa, meeting with federal political leaders, while Andy and I worked with provincial government, including the former Premier, to raise awareness about drought conditions and their effects on farmers. Engagement with government around fire regulations related to farming also continued, with the goal of achieving clearer guidance for producers.

Internally, the organization took important steps forward. A staff retreat and strategic planning session held in February, facilitated by external consultants, formed the foundation of the Strategic Plan that now guides our work.

We also secured administration and facilitation of the On-Farm Climate Action Fund for the next three years—an important opportunity that will directly benefit farmers across the province as they adopt climate-smart practices.

We were pleased this year to welcome Egg Farmers of Newfoundland and Labrador back as members, strengthening our collective voice and collaboration within the sector.

While challenges remain, we look ahead with optimism. With a committed farming community, a dedicated team, and continued collaboration across the sector, the NLFA will remain focused on supporting farmers and advocating for a strong, sustainable future for agriculture in Newfoundland and Labrador.

**Thank you.**



**NLFA BOARD EXECUTIVE: PRESIDENT WAYNE SIMMONS, SECRETARY-TREASURER HOWARD MORRY, DIRECTOR KRISTA CHATMAN, DIRECTOR KENT FUDGE, VICE PRESIDENT ANDY WRIGHT**



# BOARD OF DIRECTORS

## Executive

### **PRESIDENT**

WAYNE SIMMONS

### **SECRETARY-TREASURER**

HOWARD MORRY

### **VICE PRESIDENT**

ANDY WRIGHT

### **DIRECTORS-AT-LARGE**

KENT FUDGE

KRISTA CHATMAN

## Board Members

### **DAIRY FARMERS OF NEWFOUNDLAND & LABRADOR**

MATTHEW ROSE

### **FRUIT AND VEGETABLE GROWERS OF NL**

MELVIN J. RIDEOUT

### **EGG FARMERS OF NL**

CRYSTAL SOMERTON

### **NL CRANBERRY ASSOCIATION**

COREY REID

### **NL CATTLEMENS ASSOCIATION**

GORDON PEDDLE

### **NL YOUNG FARMERS**

LAURALEE LEDREW

### **LABRADOR AGRICULTURE ASSOCIATION**

DARREN DINSMORE

### **SHEEP PRODUCERS ASSOCIATION OF NL**

BRENDA AYLWARD

### **NL BEEKEEPERS ASSOCIATION**

TROY COOMBS

### **WOMEN IN AGRICULTURE NL**

TERRI LYNN ROBBINS

# NLFA STAFF



**Christa  
Wright**

INDUSTRY  
DEVELOPMENT  
MANAGER



**Sara  
Power**

PUBLIC TRUST  
& MARKETING  
MANAGER



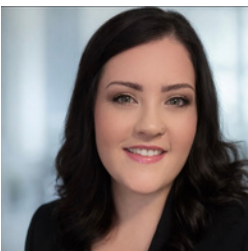
**Erica  
Taylor**

FINANCIAL  
ADMINISTRATOR



**James  
Grudić**

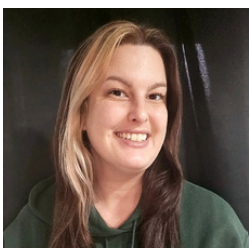
SOCIAL MEDIA  
COORDINATOR



**Heather  
Legge**

ADMINISTRATIVE  
ASSISTANT

## AGRICARE NL



**Kylie  
Stokes**

AGRICARE NL  
COORDINATOR



**Jennifer  
Canning**

ADMIN & OUTREACH  
ASSISTANT (AITC NL,  
NLYF & AGRICARE)

## AGRICULTURE IN THE CLASSROOM



**Chelsea  
Foley**

AGRICULTURE IN THE  
CLASSROOM NL  
COORDINATOR



**Maureen  
Foley**

LITTLE GREEN THUMBS  
COORDINATOR

## NL YOUNG FARMERS



**Lisa  
Davis**

NL YOUNG FARMERS  
COORDINATOR



**Mark  
Hoffe**

NLYF OUTREACH  
COORDINATOR

## AGRICULTURE CLIMATE SOLUTIONS



**Rodney  
Reid**

CLIMATE CHANGE  
MANAGER



**Kelsey  
Cullihall**

ACS KNOWLEDGE  
TECHNOLOGY TRANSFER  
COORDINATOR



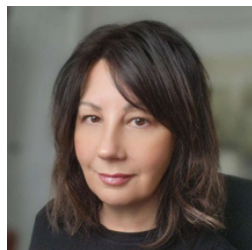
**Shelly  
Bailey**

ACS FINANCIAL  
ADMINISTRATIVE  
COORDINATOR



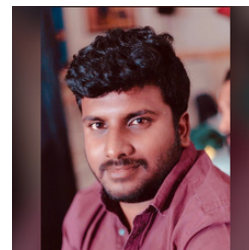
**Tyler  
Buckle**

ACS ENGAGEMENT  
COORDINATOR



**Lisa  
White**

OFCAF FUNDING  
COORDINATOR



**Krisha  
Kaja**

OFCAF TECHNICAL  
MANAGER

# Mission

To lead the advancement of a diverse, successful, and sustainable agriculture industry in Newfoundland and Labrador.

# Vision

A strong, unified voice that represents and advocates for farmers in NL.

## Values

### Accountability

We take ownership of our work and hold ourselves accountable for decision-making and communication. We acknowledge mistakes and take prompt action to correct them to the extent possible.

### Promotion

We actively engage stakeholders and develop partnerships to promote agriculture in Newfoundland and Labrador. We advocate on behalf of our members to remove barriers and grow the industry.

### Effectiveness

We value accuracy and are focused on results. We optimize the use of resources to ensure efficiency in responding to our members, partners and community.

### Creativity

We look for creative and unique solutions to solve common problems to ensure lasting change can occur. We are open to new ideas and non-traditional thinking.

### Sustainability

We always act in a manner that is environmentally, economically and socially sustainable. We support sustainable agriculture development.

### Leadership

We encourage leadership at all levels in the organization. We lead to inspire, empower, and be inclusive in working through adversity.



# NL FEDERATION OF AGRICULTURE

## Strategic Plan

The new Strategic Plan for the Newfoundland & Labrador Federation of Agriculture (NLFA) covers the period from November 1, 2025 to October 31, 2028. It establishes five strategic issues to address, with associated goals, objectives and indicators for the next three years:

**Strategic Pillar 1:** Financial Sustainability and Resilience

**Goal:** The NLFA will be financially stable by October 31, 2028.

**Strategic Pillar 2:** Bring Value to Farmers

**Goal:** The NLFA will continue to support commodity and stakeholder groups as they stabilize and grow their sectors.

**Strategic Pillar 3:** Be the Voice of Newfoundland and Labrador Agriculture

**Goal:** By October 31, 2028, the NLFA will be recognized as the voice of agriculture in Newfoundland and Labrador

**Strategic Pillar 4:** Data and Research

**Goal:** The NLFA will build reliable datasets and research partnerships that can be leveraged in support of members, commodity and stakeholder groups.

**Strategic Pillar 5:** Advocacy

**Goal:** The NLFA will advocate on issues that are important to farmers.

The development of this plan was the result of a consultation process facilitated by Len Moores and Jonathan Luedee involving several engagement sessions with commodity and stakeholder groups, a two-day strategic planning session with NLFA staff and board executive, and a membership survey (23% of NLFA members responded).

Participants were supportive of the NLFA and put forward ideas to enhance NLFA offerings and support the agriculture sector. This strategic plan reflects this input and provides a framework to move forward to support the agriculture sector now and into the future.

To read the full strategic plan document, visit [nlfa.ca/strategic-plan-2025](https://nlfa.ca/strategic-plan-2025)



**NLFA STAFF AND EXECUTIVE PARTICIPATED IN A TWO-DAY RETREAT IN FEBRUARY 2025 THAT INCLUDED STRATEGIC PLANNING SESSIONS AND TEAM BONDING ACTIVITIES.**

# Membership

During the 2024-25 membership year (November 1 – October 31), NLFA had 75 Industry Members and 5 Associate Members. This is an increase of 21% in industry members from 2023-24, when we had 62 Industry Members and 5 Associate Members.

NLFA Members Receive:

- Preferred rates at all NLFA functions (including reduced ticket prices for the Agriculture Industry Symposium and first chance to reserve your booth at the Ag Expos)
- NLFA mail-outs and email newsletters
- Subscription to Agriview magazine
- AgriVantage discounts at select businesses
- NLFA Member Card
- NLFA Member Sign and Decals
- Industry Members also have the privilege to vote and hold office on the NLFA Board of Directors

Moving forward, we will continue to advocate for our members' interests, foster a collaborative agriculture community, promote industry growth and innovation, and celebrate our farmers and local products.



**NEW THIS YEAR: WE DISTRIBUTED MEMBER SIGNAGE AND DECALS TO ALL MEMBERS TO PROUDLY DISPLAY ON THEIR PROPERTIES. SIGNS ARE AVAILABLE FREE OF CHARGE, BUT ADDITIONAL SIGNS CAN BE PURCHASED. FOR MORE INFO CONTACT [INFO@NLFA.CA](mailto:info@nlfa.ca).**



## Outreach

NLFA utilizes a number of communications platforms and tools to increase outreach to our audiences, internally and externally:

- The Agriview magazine is published three times a year and mailed to our membership list, as well as made available online: [nlfa.ca/resources](http://nlfa.ca/resources)
- NLFA members receive regular email newsletters with information about the Federation, upcoming events and news.
- Our website NLFA.CA is a hub for all updates and info about NLFA. A few stats from 2025:
  - Site sessions: 10K = 36% increase (Wix)
  - Users: 6.4K = 16% increase (Google Analytics)
  - Page views: 34K = 10.8% increase (Google Analytics)
- NLFA received several media mentions in 2025, with reporters from CBC, NTV, VOCM and Bay FM reaching out about events and news releases we distributed (regarding NLFA and program initiatives). We have been improving our relationship with media, who now come to us when big agriculture stories are ongoing, so we can make a statement and/or help them get in touch with farmers to speak with them directly. There were a number of important newsworthy issues that came up in 2025 (climate change/drought, wildfires, tariffs, to name a few.) We intend to continue building relationships with local media in order to become a top source in agriculture in the provincial.
- We hired Sprout Marketing to develop a new promotional video, which was filmed across the province in 2025 and will feature members and events. It will be debuted in 2026 and used in several membership and awareness campaigns in future.

# Social Media

Social media is an important communication tool, and NLFA primarily uses Facebook and Instagram, though we also have a presence on LinkedIn. This year, we hired a Social Media Coordinator to help utilize these platforms more to our advantage, and we are seeing the results:

- We gained a net total of 551 new Facebook followers to a total of 4,184 (61% increase)
- We gained 142 new followers on Instagram to a total of 828 (21% increase)
- The highest-viewed Facebook post reached 22,000 views, nearly six times higher than the previous record of 3,700 views.
- @nl\_farms on Instagram saw its highest-viewed reel of all time which reached 2,768 views, more than double the previous record of 1,341 views.

We have seen rapid overall growth in social media viewership and engagement in 2025 with Reels being by far the most popular type of post. Video content collected from our AG Expo events has proven to be the most popular type of content we have yet had posted on our pages.



**COMMUNITY CONNECT AT WRIGHT'S FAMILY FARM ON AUGUST 17, 2025.**

## Community Connect

In 2025, NLFA launched this new initiative to create more opportunities for connection, conversation, and collaboration across Newfoundland and Labrador's agriculture sector. These informal networking events were developed in response to member feedback and reflect our ongoing commitment to meeting farmers and agriculture stakeholders where they are — both geographically and professionally.

Community Connect kicked off on February 11 at the Corner Brook Blomidon Golf Club in recognition of Canada's Agriculture Day. The strong turnout and positive response confirmed the need for more regionally based opportunities to connect outside of our larger annual events.

Building on that early success, we gathered again in Happy Valley-Goose Bay in June, at Wright's Family Farm in Pasadena in August, and at O'Brien Farm in November.

These informal gatherings created space for meaningful conversation, collaboration, and relationship-building, and have become an important part of NLFA's efforts to engage with members and stakeholders throughout the province.



**COMMUNITY CONNECT AT O'BRIEN FARM ON NOVEMBER 7, 2025.**





**NLFA'S KYLIE STOKES AND SARA POWER HOST THE PRODUCER PANEL AT AIS 2025, WITH CRAIG LESTER, ANITA WALSH, CURTIS JENNINGS AND SHELLEY CLEARY**

## Agriculture Industry Symposium

NLFA hosted the annual Agriculture Industry Symposium January 28-30 at the Delta Hotels St. John's Conference Centre. Over 150 people attended the 2.5-day event. The event's theme of "Cultivating Tomorrow: Regeneration & Resilience" was featured through keynote speakers, panel discussions and information sessions.

### Event highlights:

- The opening reception included greetings from the Honourable Gerry Byrne, the Provincial Minister of Agriculture, and an announcement by the Honourable Joanne Thompson, Federal Minister for St. John's East about the On-Farm Climate Action Fund
- Shaun Haney from RealAgriculture recorded a podcast during his keynote speech, which included an Agronomist Panel on "Nitrogen Management in Cropping Systems".
- A movie screening of "Common Ground" sparked compelling discussions on climate change, regenerative practices and the public image of farmers in today's society
- A roundtable exercise hosted by Rosalie Gillis-Madden from Farmers for Climate Solutions on "Identifying management priorities for nutrient, soil, water and other environmental benefits".

- The producer panel with Shelley Cleary (Black Spruce Company), Curtis Jennings (Fixed Farm), Anita Walsh (Windy Heights Farm) and Craig Lester (Lester's Dairy Farm) sparked some great discussions on mental health, as well as challenges and successes on the farm.

The awards banquet on the last evening of the event showcased local food products and celebrated award winners:

- The Outstanding Contribution Award was presented to Frank and Joyce Pye of Grand River Farm
- Green Farm Innovations Inc. received the Environmental Award
- Stewart King was the 2024 inductee to the Agricultural Hall of Fame
- Jade Lawrence and Cordell Lush were the 2024 recipients of scholarships for the College of the North Atlantic Agriculture Technician program
- Katelyn Blundon was the 2024 recipient of the NLFA Scholarship to Dalhousie University

During the NLFA Annual General Meeting, all the executive board members retained their seats through acclimation, and two resolutions were passed: one to give NL Young Farmers a one-year membership to NLFA when they age out of the NL Young Farmers program; and another to restrict executive board members from holding a seat for more than three consecutive two-year terms.

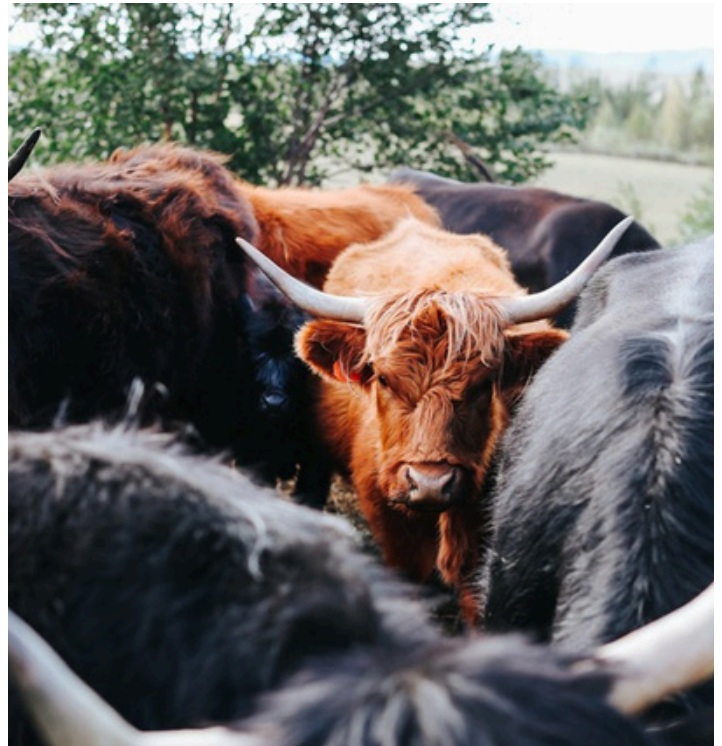


# NL Open Farm Day

Farms across Newfoundland and Labrador opened their doors on Sunday, September 21, to celebrate the 25th year of Open Farm Day, an annual initiative to celebrate and raise awareness of the agriculture industry across Atlantic Canada.

This year, 13 farms participated by hosting free in-person events or submitting a virtual tour video:

- Aldercroft Farm - Goose Bay
- Campbellton Berry Farm - Campbellton
- Crooked Branch Enterprises - Jamestown
- Exploits Meadow Farms - Bishop's Falls
- Hammond Farm Feed & Supplies and Humber Valley Holsteins - Little Rapids
- Howell's Farm & Market - Norris Point
- Lester's Farm Chalet - St. John's
- Living Water Hydroponic Farms Ltd. - Stag Harbour, Fogo Island
- Three Mile Ridge - Farm and Market Clarenville
- Windy Heights Farm - Portugal Cove
- Wright's Family Farm - Pasadena
- Black Label Farm - Virtual
- Black Spruce Company - Virtual



The Newfoundland and Labrador Federation of Agriculture organizes this interactive event with support from Agriculture and Agri-Food Canada and the Sustainable Canadian Agricultural Partnership (Sustainable CAP).

To learn more about Open Farm Day and to watch the virtual tours, visit [www.atlanticopenfarmday.ca](http://www.atlanticopenfarmday.ca).



**ALDERCROFT FARM HOSTED OPEN FARM DAY IN HAPPY VALLEY-GOOSE BAY.**





**AG EXPO VENDOR CORMACK CHEESE CO.**

## Agriculture Expos

Over 12,000 Farmers, industry experts and agriculture enthusiasts came out to celebrate all things agriculture at this year's Agriculture Expos. NLFA hosts two shows during the fall, with 8,000 people visiting the Corner Brook Civic Centre on September 12-14 and 4,500 people at the Joe Byrne Memorial Stadium in Grand Falls-Windsor on October 3-5.

This annual event highlights the importance of Newfoundland and Labrador's agriculture and agri-food industry through a farmers' market, informational booths, educational experiences and fun family activities.

Admission is free, but a local charity is chosen to receive donations from the door, the corn boil, and egg sales thanks to Newfoundland Eggs. Thanks to everyone's generosity, 4-H Newfoundland and Labrador received \$13,000 from the Corner Brook show, and in Grand Falls-Windsor, \$6,800 was given to Brett's Stand for Diabetes, a charity started by a local farming family that helps families of children with diabetes access resources, supplies and costly technologies.

The Agriculture Expos featured exhibits from various sectors, including local farmers markets with beef, turkey, eggs, vegetables, honey, cheese and more local products; culinary demonstrations by Chef Darcy Butler in partnership with College of the North Atlantic; sheep shearing with Amber Petersen; wool spinning, carding and spinning with Heritage NL; beekeeping demonstrations with the NL Beekeeping Association and more!

The Expos include many attractions for kids, including an animal farm, chick hatchery, and an interactive milking cow with School Milk. Agriculture in the Classroom NL also hosts different activities over the weekend, including the "Amazing Agriculture Adventure" for select participating schools; and on Friday "Family Fun Night," the first 100 families to visit the AITC-NL booth received the brand-new storybook "Hay! Have You Herd?"

The Agriculture Expo is hosted by the Newfoundland and Labrador Federation of Agriculture and supported by the Sustainable Canadian Agricultural Partnership (Sustainable CAP).

For recipes and photo gallery, visit [nlfa.ca/ag-expo-2025](http://nlfa.ca/ag-expo-2025).



**FOOD DEMONSTRATIONS AND SAMPLES WITH CNA CHEF DARCY AT AG EXPO 2025**

# AGRICARE NL

In 2025, AgriCare NL continued to strengthen and expand a province-wide mental health, wellness, and farm safety program. Through a combination of service delivery, outreach, training, and partnership development, the program focused on improving access to mental health supports, increasing agricultural safety awareness, and responding to emerging risks affecting farmers and farm families.



Key accomplishments included the launch of the standalone [AgriCare NL website](https://agricarenl.ca/) ([agricarenl.ca/](https://agricarenl.ca/)) and [counselling request portal](https://agricarenl.ca/request) ([agricarenl.ca/request](https://agricarenl.ca/request)), and the development of a growing network of locally based, agriculture-literate mental health professionals. A major farm safety milestone in 2025 was the delivery of the Low-Cost Roll-Over Protective Structures (ROPS) NL Pilot Program, supporting farmer-led fabrication of certified roll-over protective structures while contributing to research and future program development. Significant effort was also dedicated to direct farmer and stakeholder engagement through workshops, farm visits, conferences, and community events, ensuring that programming remained responsive to producer needs across the province.

## Communication and Marketing Initiatives

In 2025, promotion and communication efforts included the following milestones:

- Launched the standalone [AgriCare NL website](https://agricarenl.ca/) ([agricarenl.ca](https://agricarenl.ca/));
- Developed and refreshed promotional assets including program flyers, infographics, posters, banners, and branded items for events, conferences, and outreach;
- Interviews with Salts-Scapes Magazine, Top Crop Manager East Magazine and the Inputs Podcast;
- Consistent social media content across Facebook, Instagram, LinkedIn, and Bluesky to promote mental health and farm safety services, resources, events, awareness days, and occupational health and safety messaging.



## Mental Health and Wellness Services

Based on the need observed during the first year of our operation in 2024, our project maintained 24/7 access to confidential crisis support services for Newfoundland and Labrador farmers through the National Farmer Crisis Line (1-866-FARMS-01 or 1-866-327-6701), facilitated through the Canadian Centre for Agricultural Wellbeing (CCAW).

To create and grow the AgriCare Counselling Network with local and rural-based mental health providers to accept ongoing counselling requests, AgriCare began the recruitment of regulated mental health professionals across Newfoundland and Labrador, assisting them in completing agriculture literacy training through the Canadian Agricultural Literacy Program (CALP). This process has allowed us to recruit and train just under 10 local and rural-based providers this year – meaning greater access to care in the form of regulated mental health service professionals that can accept referrals and work with our farmers when they need support.

In July 2025, AgriCare launched the Online AgriCare Counselling Request Portal ([www.agricarenl.ca/request](http://www.agricarenl.ca/request)) where Newfoundland and Labrador producers can discreetly and privately request ongoing counselling sessions with a mental health professional covered by AgriCare NL. This request platform ensures privacy, confidentiality, and facilitates timely referrals to local regulated mental health practitioners in Newfoundland and Labrador who have completed additional training through CALP.



## Farmer and Stakeholder Engagement

Throughout 2025, AgriCare engaged directly with farmers across Newfoundland and Labrador, where we gathered and documented their feedback to inform program improvements and future mental health and farm safety initiatives and/or resources. This was achieved through:

- In-person workshops and presentation evaluations;
- Farm site visits and group tours with industry collaborators like the NL Young Farmers and Agriculture and Agri-Food Canada's Agricultural Climate Solutions delivered through the Newfoundland and Labrador Federation of Agriculture (NLFA);
- Attending and presenting at industry conferences, trade shows and EXPOs;
- Participating in industry community connect events, facilitated through the NLFA.

By attending industry events, conferences, and tradeshow, facilitating mental health workshops and farmer wellness presentations as well as providing one-on-one consultations to producer groups experiencing acute stressors, AgriCare maintained strong relationships with local commodity group leaders, community organizations, and industry collaborators supporting agriculture in Newfoundland and Labrador. Additionally, we maintained collaborative partnerships with government representatives in agriculture, local and national mental health and occupational safety regulatory and research bodies, including:

- The Canadian Centre for Agricultural Wellbeing (CCAW);
- The Canadian Agricultural Safety Association (CASA);
- The Do More Ag Foundation;
- The Canadian Counselling and Psychotherapy Association (CCPA);
- Memorial University (MUN) SafetyNet;
- Workplace NL;
- College of the North Atlantic Ag Tech Program;
- and the University of Saskatoon's Centre for Rural and Agricultural Health.



## Educational Resources and Farm Safety Guides

In 2025 with the official launch of the [AgriCare NL website \(agricarenl.ca/\)](https://agricarenl.ca/), we curated and expanded a comprehensive online Resource Hub with links to external and in-house resources covering a vast range of topics and including [farm safety and wellness guides](#), [emergency planning and OHS audit checklists](#), [reading material and videos](#), [worksheets](#), and [links to online tools for farm business management](#). All reference materials align with NL Occupational Health and Safety (OHS) and Canadian Counselling and Psychotherapy Association (CCPA) standards, and agricultural best practices.

AgriCare has also dedicated time to the research and development of specialized resources in-house, including but not limited to:

- [Newfoundland and Labrador Community Help Lines Reference Guide](#);
- [AgriCare Wellness Services FAQs](#);
- [Mental Health Counselling FAQs](#);
- [Mental Health Emergencies: Best Practices Guide](#);
- [“Wildfire Disaster Recovery Guide”](#) – providing steps for coping with evacuation and recovery and linking those affected by the 2025 wildfires to local and provincial resources and supports to help them recover from evacuation or property damage on-farm;
- [The NL Livestock Mobilization Online Facebook Group](#) – a community-led group facilitated by AgriCare NL for Newfoundland and Labrador livestock owners to connect and help each other with moving and caring for animals during natural disaster evacuations;
- [“The Farmer’s Hierarchy of Needs”](#) – a mental health and wellness guide;
- [“Farm Vision Worksheet”](#) – a vision board tool for finding inspiration for your farm business;
- [“Farming Wellness”](#) – a wellness journal with custom prompts inside to encourage the writer.



**AGRICARE NL COORDINATOR KYLIE STOKES  
AT THE AGRICULTURE INDUSTRY SYMPOSIUM  
IN JANUARY 2025**

## Quarterly Steering Committee Meetings

During 2025, AgriCare was governed by a steering committee of 9 members including NL farmers and producers, NLFA executives, provincial agriculture department representatives, and mental health advocates. This committee facilitated quarterly in-depth planning sessions, monthly reviews of mental health service usage data, and progress on key project objectives and deliverables. Based on NL producer feedback, we recruited new steering committee representation from the [Labrador Agriculture Association \(LAA\)](#) and [NL Young Farmers](#) to strengthen provincial and diverse perspectives.

## Training and Orientation Programs

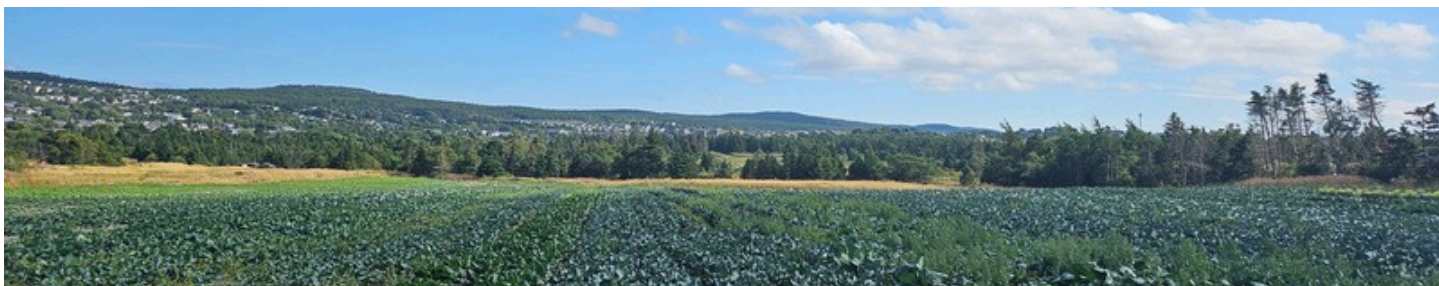
Throughout 2025, AgriCare planned and delivered mental health, wellness, and safety training sessions for farmers, industry collaborators, and partner organizations. These addressed topics such as mental health awareness and literacy, and farm safety topics including roll-over protective structures (ROPS) and emergency preparedness on the farm.

National research continues to demonstrate that farmers are in crisis. In the month of November 2025, 18 staff from the NLFA attended a full-day session and received certification in Mental Health First Aid, delivered by [Opening Minds](#) and facilitated through the [Do More Ag Foundation](#). Working directly alongside farmers in our province day in and out, staff of the NLFA recognized the importance of completing practical training to feel prepared when supporting someone during a mental health crisis.



**AT THE NL YOUNG FARMERS LEADERSHIP SUMMIT, ADAM FURLONG FROM OUTPORT ACRES HOSTS A TOUR AND TALK ABOUT FARMER-FOCUSED MENTAL HEALTH.**





## Farm Safety, Mental Health & Wellness Events and Initiatives

Our project planned, coordinated, and delivered in-person and virtual events tailored to agricultural audiences throughout the year including in-person Lunch-and-Learn sessions, virtual webinars and information sessions, and workshops in the field focused on mental health and safety in agriculture. We also supported collaborative events and participated in annual meetings and conferences with partner organizations, including [Women in Agriculture NL](#), [NL Young Farmers](#), [NL Living Lab](#) and [Agricultural Climate Solutions NL](#), and commodity associations such as the [Dairy Farmers of Newfoundland and Labrador](#) (DFNL). Through these events and community gatherings, AgriCare contributed to provincial and national awareness initiatives related to agricultural mental health and wellness, farm safety, and emergency preparedness.

As part of a new farm safety initiative in 2025, AgriCare partnered with the [University of Saskatoon](#) and the [Canadian Centre for Rural and Agricultural Health](#) (CCRAH) to deliver the [Low-cost Roll-over Protective Structures \(ROPS\) NL Pilot Program](#). This initiative provided funding and ground support from an agriculture engineer to NL farmers with welding experience to fabricate and retrofit their own certified ROPS structure, tested and certified through the University of Saskatoon to meet CSA Standards. This initiative and the work of our NL farmer participants significantly supported the research, evaluation, and ethical processes related to occupational health and safety academic study and future program development.

## Coordinator Training and Professional Development

As part of activities related to internal training and professional development, and in support of the initiative to increase knowledge and awareness that supports farmer wellbeing in Newfoundland and Labrador, AgriCare's lead coordinator completed professional development training in agricultural occupational health and safety (including psychological health and safety in the workplace), effective stakeholder engagement and proposal writing coursework, as well as Standard First Aid / CPR +AED and Mental Health First Aid Facilitator training.

AgriCare's coordinator also attended provincial and national conferences, forums, and monthly roundtables related to agricultural safety and mental health – including:

- The Canadian Counselling and Psychotherapy Association (CCPA) 2025 Conference in Calgary, AB
- The Agrifood-Innovation Council 2025 Conference in Ottawa, ON
- The NL Young Farmers 2025 Leadership Summit in Clarendville, NL
- The Dairy Farmers of Newfoundland and Labrador (DFNL) Annual General Meeting in St. John's, NL

Additionally, our coordinator participated in a national initiative, filling an advisory role as a juror with [Agriculture and Agri-Food Canada's \(AAFC\) Producer Wellbeing Initiative 2024-2025](#), advising on proposals for mental health and wellness programs for agricultural populations across Canada.

## Program Administration and Management

Our project managed day-to-day program operations including reporting, budgeting, expense tracking, and compliance with funding requirements – and annual operations such as future funding proposals, partnership agreements and service contracts to support program delivery and sustainability.

## Conclusion

Overall, 2025 marked a year of consolidation and growth for AgriCare NL, reinforcing its foundation as a coordinated, evidence-informed, and farmer-centered initiative supporting mental health, wellness, and safety in Newfoundland and Labrador's agriculture sector.



**NL YOUNG FARMERS LEADERSHIP SUMMIT - AGRICARE NL FIELD DAY, OCTOBER 18, (2025) THREE MILE RIDE, LETHBRIDGE, NL: KRISTA CHATMAN PROVIDES A TOUR OF HER FARM TO THE YOUNG FARMER SUMMIT ATTENDEES.**

AgriCare NL is funded by the Sustainable Canadian Agricultural Partnership (Sustainable CAP). Sustainable CAP is a five-year (2023-2028), \$3.5 billion agreement between federal, provincial and territorial governments to strengthen the competitiveness, innovation and resiliency of Canada's agriculture, agri-food and agri-based products sector. This includes \$1 billion in federal programs and activities and \$2.5 billion in cost-shared programs and activities funded 60 per cent by the federal government and 40 per cent by provincial/territorial governments for programs that are designed and delivered by provinces and territories. Sustainable CAP supports initiatives to provide mental health and wellness resources to the Newfoundland and Labrador agriculture and agri-foods industry.



# AGRICULTURE IN THE CLASSROOM NL

AITC-NL delivers agriculture education in an interactive, hands-on, virtual, and inquiry-based learning manner and strives to connect youth to agriculture through education.

The AITC-NL program continues expanding to reach our goal of connecting agriculture to students from Kindergarten to Grade 12. Our program is only as strong as the dedication and passion of the members of the AITC Steering Committee, farmers, and volunteers. We extend our appreciation to everyone that believes in our organization and donates their time and efforts.

AITC-NL would like to thank our partners, including the NLFA, and the federal and provincial governments through the Sustainable Canadian Agricultural Partnership. We also thank the community partners and business/commodities that support our program and the teachers and administrators from all schools across the province that open their classrooms to us.

In 2025, AITC-NL created over 75,000 student experiences through activities, initiatives, and events including: in-class and virtual presentations and resource downloads. Here are some of the initiatives throughout the year:



## Canada's Ag Day

Canada's Agriculture Day, held on February 11, is a time to showcase all the amazing things happening in our industry and create a closer connection with the public about where their food comes from and the people who produce it.

AITC-NL hosted an agriculture trade show at St. Bernard's Elementary in Witless Bay on February 13 (delayed due to weather) with over 300 students, teachers and special guests. Volunteers from various commodity groups and agriculture professionals shared their knowledge and offered students an interactive and hands-on learning experience, with exciting giveaways provided by the School Milk Foundation of NL, Egg Farmers of NL, and AITC- NL.

After the trade show, students, teachers, volunteers, and guests were treated to a live performance from the JUNO Award-winning band, The Swinging Belles, who wrote and produced AITC-NL's theme song, "I'm a Little Green Sprout" for the Little Green Sprouts indoor gardening program.

All Kindergarten to Grade 12 teachers throughout the province had the opportunity to participate in a social media contest showing us how their classes celebrate Canada's Agriculture Day by adding the hashtag #CdnAgDay and tagging @AITCNL in their social media posts. We encouraged all teachers to show us how they celebrate the food we grow here in Newfoundland and Labrador.



**MS. BISHOP'S CLASS AT COWAN HEIGHTS ELEMENTARY DURING CALM.**

## Canadian Agriculture Literacy Month (CALM)

CALM is a national initiative hosted by Agriculture in the Classroom Canada (AITC-C) in the month of March. CALM is a hands-on program that encourages children to learn about and celebrate agriculture in various ways, including reading books about agriculture and watching virtual farm tours and agriculture videos. An important element of this event is the connection between students, local farmers, and agriculture industry representatives and how AITC-NL strives to continue to make that connection.

AITC-NL provided over 4,800 student experiences through this program to Kindergarten to Grade 12 classrooms. AITC-NL shared the stories of farmers and agriculture professionals with online presentations, virtual farm tours, and other resources.

This year, AITC-NL launched a new resource for Grades 2 to 4 called "Follow the Food". Food is wasted and lost every day around the world, but do we understand the impact of that on food security, the economy, and the environment?

Follow the Food – Exploring Food Loss and Food Waste is a hands-on, inquiry-based resource to help students gain a better appreciation for the value of food, the resources that go into making it, how the agriculture and agri-food industry in Newfoundland and Labrador reduces food loss and waste, and the role schools and students can play in reducing food waste.

## Bee Creative Literacy Contest March 2025

In March of 2025, AITC-NL partnered with the Newfoundland and Labrador Beekeeping Association (NLBKA) and Egg Farmers of Newfoundland and Labrador (EFNL) again to host the Bee Creative Literacy Contest for kindergarten to grade 6 classes. Winning classes received an empty beehive to decorate, and the hive was returned to the beekeeper to become home to a new colony of honeybees. Congrats to the Bee Creative Literacy Contest winners for 2025: Ms. Mercer, Juniper Ridge Intermediate, Torbay; Ms. Carter, Ecole CC Loughlin, Corner Brook; Ms. Green, Immaculate Heart of Mary, Corner Brook.





**FARMER BRAD, EXPLOITS MEADOW FARM**

## Great Canadian Farm Tour

The Great Canadian Farm Tour (GCFT) virtually connects students with real farmers across the country to inspire interest in learning about the important role agriculture plays in their lives.

AITC-C and its 10 provincial members hosted season five of the GCFT in the fall of 2025. Tours included virtual visits to 11 farms focusing on the diversity of commodities across the country.

Students from Kindergarten to Grade 6 had the opportunity to learn about Canada's agriculture and food story, connect and interact virtually with farmers on their own farms, and experience real farm environments. Some farm tours included a dulce farm, goat farm, deer farm, bakery, ostrich farm and more!

AITC-NL co-hosted a stop at Exploits Meadow Farms on November 25. Farmer Brad Smith, showed students around the farm, focusing on their sheep and lamb production side of the farm. Students got to learn about sheep, sheep health, lambing processes, and products produced using the sheep's wool and the lamb's meat. Brad got to interact and answer questions with students from all over Canada. The Great Canadian Farm Tours give students the opportunity to learn about agriculture from all over Canada.

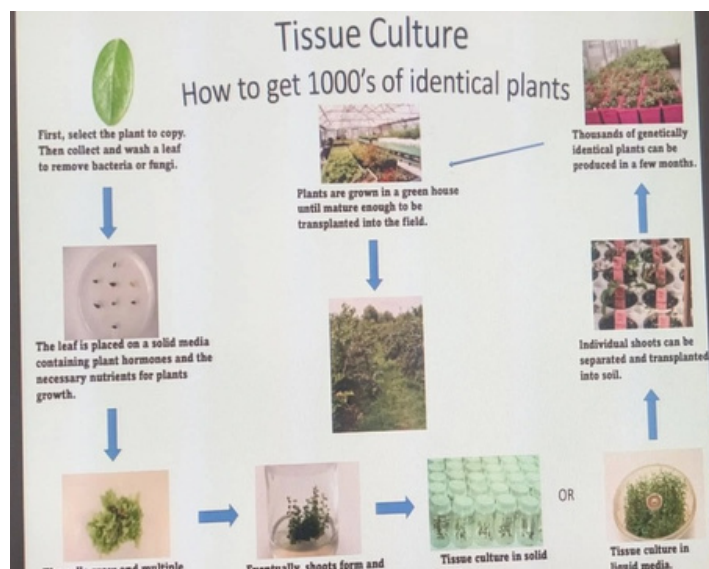
The Newfoundland and Labrador stop for AITC-NL has over 500 views on AITC-C's YouTube channel. AITC-C reported that there were over 260,000 student experiences in November and December, 2025.

## Grade 7 to 12 Initiatives

AITC-NL attended EcoSchool Canada's Green Careers fair on March 12, where the AITC-NL coordinator presented on AITC-NL and Careers in Agriculture with the commodity matching game. Over 100 Grade 9 to 12 students came to learn more about green careers. This event allowed students the opportunity to learn from leaders in a variety of fields connected to sustainability. at Corner Brook Regional High School with over 500 students.

AITC-NL also participated in the Women's Resource Development Corporation's (WRDC) Career Connections in Agriculture virtual event with NL Young Farmer's (NLYF) representative Heather Zurel on March 13. WRDC partnered with industry, education, and community stakeholders to coordinate and deliver regional employment information sessions. Sessions served as an information hub where women can be linked to existing resources and services as well as local employment opportunities, and network with other women and stakeholders in their region.

Other high school initiatives include classroom visits from farmers, agriculture professionals, and researchers. AITC-NL continues to work with AITC-C on national initiatives including Mission Explorium, thinkAG website and events, Kareero app, and Career Case game.







**CRANBERRY EXHIBIT AT THE AGRICULTURE EXPO AMAZING AGRICULTURE ADVENTURE**

## Amazing Agriculture Adventure

In-person Amazing Agriculture Adventures (AAA) were held during the recent Agriculture Expos in Corner Brook and Grand Falls-Windsor. Over 500 students and teachers went from booth to booth visiting farmers and agriculture representatives to learn about the province's agriculture industry. Students were excited to participate in hands-on activities, including making nutrient bracelets and living necklaces, commodity matching, animal farm, beekeeping displays, and more!

AITC-NL hosted an exciting Virtual Amazing Agriculture Adventure for Grades 4, 5, and 6 classes from November 24 to December 12, 2025. Teachers received a package that included video links to several farm tours and agriculture related videos, and the classes answered a series of questions based on whichever four videos they chose. Topics included in the farm tour videos are Food Safety, Chicken Farming, Berry Farming, Lester's Farm Market tour, Mark's Market tour, Dairy Farm, Egg Processing, Plant Adaptations, Cranberry Farming, and more!

## Little Green Thumbs

The Little Green Thumbs (LGT) program is an indoor gardening program, currently in its 14<sup>th</sup> year, focusing on Grades 3 to 6. It gives the students and teachers the opportunity to become food producers right in their own classroom.

Little Green Sprouts (LGS) is a junior Little Green Thumbs gardening program for Kindergarten to Grade 2 that includes a smaller system for micro-greens (lettuce, herbs, etc.). It enables our younger students to care for their own garden. LGT/LGS gardens are in 120 elementary/primary schools across Newfoundland and Labrador.

### Overview LGTs and LGSs Gardens

#### **January 2025 – June 2025 (School Year 2024-2025)**

- 180 LGT gardens
- 174 LGS gardens
- Upgraded 33 old lighting system to LED

#### **September 2025 – December 2025 (School Year 2025-2026)**

- 194 LGT gardens including 14 new and refurbished
- Upgraded 37 old lighting system to LED – approximately 90 percent of our lighting systems are now upgraded
- 182 LGS gardens includes 8 new gardens

The gardens have inspired conversations about nutrition, healthy eating, cooking, and planting.

Children who grow their own food are much more willing to try new foods. The Little Green Thumbs and Sprouts gardens have become the focal point of the classroom. Many outdoor school community gardens have grown from the LGT classroom gardens. Students have their families participating in growing at home and have developed home and community gardens with the skills they have acquired through the LGT program.

Ongoing support has been provided for all teachers throughout the entire school year by the Little Green Thumbs coordinator, volunteer mentors, LGT National office, and other teachers. There is a national website [littlegreenthumbs.org](http://littlegreenthumbs.org).





## ST. MATTHEWS HARVEST CELEBRATION

# LGT Virtual Teachers' Training Session

The LGT Virtual Teachers' Training session was held on October 10, 2025. In attendance were 14 new and current teachers and National LGT Director - Will Brooks. Teachers were presented with an overview of the AITC-NL Program, the LGT Mentorship program, AITC-C national dashboard, national LGT resources, and more!

Teachers were provided with details on how it all starts, journals, seeds, germination, transplanting, vermicomposting, and of course, recipes, and eating.

Benefits of the program to teachers and students were discussed, such as: curriculum links; gardens' contribution to improving social and emotional well-being; creating meaningful connections between gardens and agriculture; building environmental stewardship; sharing knowledge of local food and farmers; building responsibility and classroom inclusiveness; planting the seeds of healthy eating; transforming wonder into knowledge; and creating pride in knowing they can grow something themselves.

Teachers also got to hear from long-term LGT teachers about their experiences with their gardens. Some teachers have had their gardens for 14 years since the beginning of the program.



**MUN'S PRE-SERVICE TEACHERS REVIEWING AITC-NL'S RESOURCES**

## MUN Partnership

AITC-NL has partnered with the Faculty of Education at Memorial University to introduce AITC-NL programming to pre-service teachers that will be teaching Kindergarten to Grade 12 science. AITC-NL has given them a Little Green Thumbs garden to learn about the program with a hands-on approach. The pre-service teachers were introduced to the Teacher Dashboard where they access hundreds of free agriculture curriculum-linked resources. We're excited to continue this partnership into 2026.

## Agriculture in the Classroom Canada

Agriculture in the Classroom Canada (AITC-C) is a national organization that creates programs and resources to support our member organizations in each of the 10 provinces. Provincial partners, like Agriculture in the Classroom NL (AITC-NL), are the boots on the ground, delivering programs and resources to help teachers get agriculture education into classrooms across Canada. AITC-C's mission is to cultivate a meaningful connection to agriculture and food for students and educators.

Each year, the AITC-C collective across Canada creates more than two million student experiences through programs and resources, making valuable connections to agriculture and agri-food. In addition to developing hands-on programs, our Canadian resource library offers educators hundreds of resources in French and English that are linked to provincial curriculum outcomes.

Together, the AITC-C collective has the power to make a difference by helping to change behaviours and practices through education and awareness beginning in the classroom. To learn more about AITC across Canada, visit [www.aitc-canada.ca](http://www.aitc-canada.ca)

Agriculture in the Classroom NL is funded by the Sustainable Canadian Agricultural Partnership (Sustainable CAP). The Sustainable Canadian Agricultural Partnership is a five-year (2023-2028), \$3.5-billion investment by federal, provincial and territorial governments to strengthen the competitiveness, innovation and resiliency of Canada's agriculture, agri-food, and agri-based products sector. This includes \$1 billion in federal programs and activities and a \$2.5-billion commitment that is cost-shared 60% federally and 40% provincially/territorially for programs that are designed and delivered by provinces and territories. The Sustainable Canadian Agricultural Partnership provides \$330,000 annually to support Agriculture in the Classroom activities to connect youth to agriculture and increase awareness of how food is grown in Newfoundland and Labrador.



**Sustainable Canadian  
Agricultural Partnership**



**Canada**



# NL YOUNG FARMERS

Administered by the Newfoundland and Labrador Federation of Agriculture (NLFA), NL Young Farmers continues its mission to support and nurture the success of young farmers aged 18-40 in a profitable and sustainable agriculture sector across Newfoundland and Labrador. The organization offers resources, training, workshops, and networking opportunities to connect members with other farmers and industry stakeholders. The following are key initiatives that took place in 2025.

## Leadership Summit

The 12<sup>th</sup> annual NL Young Farmers Leadership Summit took place October 17-18, 2025, in Clarenville and the surrounding area. This year's summit was a collaboration with AgriCare NL, the mental health and farm safety program administered by the NL Federation of Agriculture. The summit's theme was "Cultivating Sustainability." Day One highlights included:

- Maureen Kirkpatrick (Director of National Foodraising, Second Harvest) provided a presentation and roundtable session about reducing food waste.
- Keynote speaker Ivan Emke (Kitchen Table Communications) explored sustainable agriculture with a strong focus on rural sustainability.
- Taras Ivanina (Ukrainian National Federation of Canada, Avalon Branch) was joined by farmer Anatolii Tyshchenko (Smoke UA Workshop) to speak about how Ukrainians contribute to the provincial agriculture industry.
- A screening of the feature documentary Tea Creek about an Indigenous-led farming initiative in northern British Columbia.



### A PANEL DISCUSSION ABOUT SUSTAINABLE FOOD DISTRIBUTION AT THE 12<sup>TH</sup> ANNUAL LEADERSHIP SUMMIT

- A panel discussion about sustainable food distribution; panelists were Richard Butt (Western NL Food Hub/Birchbark Farm), Vicki Axford (Avalon Food Hub), Adam Furlong (Outport Acres), and moderator Christa Wright (Industry Development Manager, NLFA).
- A panel discussion about Indigenous food sovereignty and sustainability; panelists were Brian Davis (Taiga Valley Farms and Ranches), Hilary Buckle and Boyce Campbell (Black Spruce Homestead), and moderator Chris McKee (Senior Vice-President of Business Development, National Circle for Indigenous Agriculture and Food)
- A networking banquet with a three-course meal that included local products from Exploits Meadow Farms, Outport Acres, Three Mile Ridge, Cormack Cheese Company, Crooked Branch Enterprises, and Country Ribbon.



**IN COLLABORATION WITH AGRICARE NL, LEADERSHIP SUMMIT DELEGATES VISIT THREE MILE RIDGE FOR A DISCUSSION ABOUT FARM SAFETY.**

Day Two was hosted by Kylie Stokes, AgriCare NL Coordinator. It featured farm tours and discussions about farmer-focused mental health and safety. Highlights included:

- A trip to Farm and Market Clarenville for a discussion about relationship building and stress management as a business strategy.
- A farm tour of Three Mile Ridge; during the tour, Krista Chatman hosted a discussion about the business of staying safe and why farm safety pays off.
- A farm tour of Outport Acres with Adam Furlong to talk about why taking care of your mental health is vital for farm sustainability.

Positive feedback about the Leadership Summit included:

- "I was inspired by the enthusiasm of the people who attended and the range of interests that were represented. It is quite a wide range."
- "I learned more about the history and current landscape of Indigenous agriculture in Canada & Newfoundland and Labrador. I didn't know much about it before, but I would like to learn more about Indigenous ag practices and how to improve education and food security in remote communities."

- "I learned about so many things! I now have a bigger community of young farmers to connect with and learn from too!"
- "Newfoundland and Labrador farmers are models of perseverance!"

Media coverage included:

- Richard Duggan from VOXM interviewed Lisa Davis (Coordinator, NL Young Farmers)
- Martin Jones from CBC Newfoundland Morning interviewed Mark Hoffe (Outreach Coordinator, NL Young Farmers)
- A story on CBC's Here and Now by Troy Turner; he interviewed Heather Zurel and David Porter (Data Farms/Vinland Acres Forest Farm), Adam Furlong (Outport Acres), Kylie Stokes (AgriCare NL) and Mark Hoffe (NL Young Farmers).

Information booths included: NL Young Farmers, NL Federation of Agriculture, AgriCare NL, Agriculture in the Classroom NL, Agriculture Climate Solutions (OFCAF NL/NL Living Lab), Harvey & Company, NL Kubota, Western NL Food Hub, and Farm Credit Canada.

The Leadership Summit was sponsored by Harvey & Company (Harvest/Banquet Sponsor), Farm Credit Canada (Lunch & Nutrition Break Sponsor), NL Kubota (Root Sponsor), and the Town of Clarenville (Seed Sponsor).

# Mentorship Program

The NL Young Farmers Mentorship Program matches experienced mentors with mentees aged 18-40 who are interested in farming or already have some farming experience and are planning to start their own farm business. Current participants include:

- Mentors Anita and Gerard Walsh (Windy Heights Farm) and mentee Alyx King (Rainbow Ridge Farm).
- Mentor Matt Morry (Heritage Farm NL) and mentees Anja Sajovic and Tavish Russell (Farm on Forest).

# Workshops and Training

Based on a membership training needs survey conducted in September 2025, NL Young Farmers offered various training opportunities for its members.

On October 30, 2025, NL Young Farmers collaborated with the Newfoundland and Labrador Composting Co-operative and O'Brien Farm to host "Farm Composting: Barriers and Opportunities" at O'Brien Farm. Highlights included:

- Viviana Ramírez-Luna (Director, NL Composting Co-operative) provided an overview of the NL Composting Co-operative and explored the links between small-scale composting and farming.
- During a formal presentation and tour of the farm, Aaron Rodgers (Manager, O'Brien Farm) presented an overview of the farm's composting initiatives.
- A round table discussion moderated by Viviana Ramírez-Luna allowed attendees to introduce themselves and discuss their composting experience.
- The event was recorded and released on the NL Young Farmers website and YouTube channel.



**ALYX KING FROM RAINBOW RIDGE FARM AT THE ADVANCING WOMEN IN AGRICULTURE CONFERENCE (EAST) IN NIAGARA FALLS.**

Also based on the membership training needs survey, future training events include:

- A webinar about the crown lands application process in collaboration with the Department of Forestry, Agriculture and Lands; tentatively scheduled for January 2026.
- A full-day business planning workshop at the St. John's Farmers' Market in collaboration with the Department of Forestry, Agriculture and Lands and Farm Credit Canada; scheduled for February 2026.
- A webinar about regenerative agriculture in collaboration with Regeneration Canada; tentatively scheduled for March 2026.





**NL YOUNG FARMERS MEMBER ANNA LYRIC  
AT NL EATS' 2025 FOOD FORWARD  
CONFERENCE.**

## Conferences

In partnership with the Sustainable Canadian Agricultural Partnership, NL Young Farmers covered 100% of registration, travel, and accommodation costs for members to attend the following conferences:

- Matt Morry (Heritage Farm NL), Canada's Outdoor Farm Show in Woodstock, Ontario, September 9-11, 2025.
- As part of the Mentorship Program, Alyx King (Rainbow Ridge Farm) and Anita Walsh (Windy Heights Farm), Advancing Women in Agriculture Conference East, Niagara Falls, Ontario, November 23-25, 2025.
- Adam Furlong (Outport Acres), AgEx Conference and Farm Credit Canada Young Farmer Summit, Winnipeg, Manitoba, November 17-20, 2025. Mark Hoffe, NL Young Farmers Outreach Coordinator, also attended and participated in a Young Farmer/Young Leader Roundtable Discussion hosted by representatives from Farm Management Canada, the Canadian Federation of Agriculture, and Farm Credit Canada.

In partnership with the Sustainable Canadian Agricultural Partnership, NL Young Farmers covered 75% of registration, travel, and accommodation costs for members Anna Lyric and Emma Howell to attend the NL Eats Food Forward Conference from September 12-13, 2025, in St. John's.

## Collaborative Initiatives and Events

NL Young Farmers continues to collaborate with other agriculture-related organizations across Newfoundland and Labrador and Canada. NL Young Farmers hosted information booths and distributed promotional materials at the following events:

- Downhome Expo in Mount Pearl, May 2-4, 2025.
- St. John's Farmers' Market, June 7, 2025.
- Corner Brook Ag Expo, September 12-14, 2025; participated in the AITC-NL Amazing Agriculture Adventure on September 12.
- Grand Falls-Windsor Ag Expo, October 3-5, 2025; participated in the AITC-NL Amazing Agriculture Adventure on October 3.
- MUN Career Fair in St. John's, September 24, 2025.

Other collaborations included:

- Distribution of promotional materials at Sheep to Sock on May 17, NL Beekeepers Association from May 30-31, NL Cattle Producers Association AGM on June 15, and NL Eats Food Forward Conference from September 12-13, 2025.
- Attended the NL Job Forum hosted by Department of Jobs, Immigration and Growth at the Holiday Inn in St. John's, June 11, 2025.
- Attended the Community Connect Event at Wright's Family Farm in Pasadena, August 17, 2025.
- Attended and presented at the Women in Agriculture NL Rooted in Resilience Workshop in Steady Brook, August 18, 2025.
- Attended Virtual Fireside Chat with Gerry Friesen, author of The Recovering Farmer, in collaboration with AgriCare NL, October 10, 2025.

- Attended Mental Health First Aid Training in collaboration with AgriCare NL, November 6, 2026.
- Attended the Agriculture Climate Solutions NL Nitrogen Management event and NLFA Community Connect event at O'Brien Farm, November 7, 2025.

NL Young Farmers also attended a variety of webinars hosted by Farm Management Canada, Canadian Agricultural Human Resources Council, NL Composting Co-operative, and Food Producers Forum.

## Promotional Activities

NL Young Farmers continues to distribute promotional materials at various events. Promotional materials include brochures, postcards, New Farmer Guide 3.0, and branded merchandise that includes Post-It notes, toques, hoodies, T-shirts, and tote bags. During the last two weeks of July 2025, a 30-second radio ad aired on VOCI and K-Rock. That timeframe saw a significant increase in membership applications.

In the Summer 2025 issue of Agriview, NL Young Farmers published "Saving Seeds with Seed to Spoon Farm," a story about how member Adam Grevatt and his wife Sarah Crocker practice organic farming and seed saving on their farm. The Fall 2025 issue of Agriview included a full-page membership drive ad and two stories: a regular story about members Anna Lyric and Emma Howell attending the NL Eats Food Forward Conference and a feature story about Ukrainian farmers in Newfoundland and Labrador.

## Fieldnotes Newsletter

NL Young Farmers published Fieldnotes in the spring, summer, and fall of 2025. Highlights from this year's issues included:

- Profiles of members Hilary Buckle and Boyce Campbell (Black Spruce Homestead), Rebekka Raine (Rabbitfoot Croft & Creamery), and Felicia Hillier (SABRI Farms).



### THE FALL 2025 ISSUE OF FIELDNOTES FEATURED STORIES ABOUT FELICIA HILLIER FROM SABRI FARMS AND DARREN DINSMORE FROM ALDERCROFT FARM.

- Stories about College of the North Atlantic's Agriculture Technician Program, the NL Young Farmers Leadership Summit, and Aldercroft Farm's new abattoir
- Reviews of Dan Rubin's Sun, Seed & Soil: Tips & Techniques for a Northern Garden, Brian Davis' Resilient Agriculture: A Whole-System Approach, and Gerry Friesen's The Recovering Farmer.
- Recipes for rhubarb lemonade submitted by Adam Grevatt (Seed to Spoon Farm), cauliflower mustard pickles submitted by Lauralee Ledrew (Upper Humber Settlement), and salsa fresca/pico de gallo submitted by Adam Furlong (Outport Acres)

The next issue of Fieldnotes is scheduled for publication in Winter 2026.



## Farm Walk Series

The Farm Walk video series features NL Young Farmers members with the goal to inspire other young farmers. This year's videos include Adam Furlong (Outport Acres) and Alyx King (Rainbow Ridge Farm). Currently in post-production, the videos are scheduled to be released on our website, YouTube channel, and social media in January 2026.

## Podcast

The new NL Young Farmers Podcast series explores how and why our members started farming. It offers inspiration and information for other young farmers. In December 2025, NL Young Farmers released the first episode, which featured an interview with members Anja Sajovic and Tavish Russell (Farm on Forest). Also in December, an interview was recorded with Mackenzie and Genevieve Warford (Papa's Farm/Canadian Hydroponic Association) and is scheduled for release in January 2026.

## Social Media

NL Young Farmers continues to utilize social media to promote our organization and members, offer resources and information, and connect with farmers and other agriculture-related organizations. Our Young Farmer of the Week social media campaign took place in spring and fall 2025. The campaign increased engagement with our organization and featured the following members for one week each:

- Alyx King (Rainbow Ridge Farm)
- Adam Furlong (Outport Acres)
- Jasmine Gale (College of the North Atlantic Agriculture Technician Program)
- Madonna Savory (Madonna's Hobby Farm)
- Anja Sajovic and Tavish Russell (Farm on Forest)
- Hilary Buckle and Boyce Campbell (Black Spruce Homestead)
- Cassandra Rideout (Rideout's Dairy)
- Rebekka Raine (Rabbitfoot Croft & Creamery)



**THE FIRST EPISODE OF THE NEW NL YOUNG FARMERS PODCAST FEATURED ANJA SAJOVIC AND TAVISH RUSSELL FROM FARM ON FOREST.**





**DURING THE WORKSHOP “FARM COMPOSTING: BARRIERS AND OPPORTUNITIES,” AARON RODGERS DISCUSSES COMPOSTING INITIATIVES AT O’BRIEN FARM.**

NL Young Farmers is funded by the Sustainable Canadian Agricultural Partnership (Sustainable CAP), a five-year (2023-2028), \$3.5-billion agreement between the federal, provincial, and territorial governments to strengthen the competitiveness, innovation, and resiliency of Canada’s agriculture, agri-food, and agri-based products sector. This includes \$1 billion in federal programs and activities and \$2.5 billion in cost-shared programs and activities funded 60 per cent by the federal government and 40 per cent by provincial/territorial governments for programs that are designed and delivered by provinces and territories. Sustainable CAP provides \$230,000 annually to support NL Young Farmers activities in Newfoundland and Labrador.



**Sustainable Canadian  
Agricultural Partnership**

**Newfoundland  
& Labrador**

**Canada**

# NL LIVING LAB

## Innovation Through Collaboration: The NL-LL's Impact Across NL

The Newfoundland and Labrador Living Lab (NL-LL) continued to advance agricultural innovation across Newfoundland and Labrador throughout 2025, strengthening partnerships among farmers, researchers, and industry stakeholders while driving progress on climate-smart practices. Early in the year, research leads shared updates on ongoing on farm trials, with a major focus on nitrogen-use in potato fertility management. This work aims to co-develop beneficial management practices (BMPs) that translate scientific findings into practical, farmer ready solutions. Co-development means that farmers, researchers, and partners work side-by-side from the earliest stages of a project—identifying challenges, shaping research questions, designing and implementing field trials, and interpreting results together.

This collaborative process not only creates new practices but also helps refine the trialed BMPs, ensuring they are grounded in local knowledge, scientifically validated, and adaptable to the diverse conditions across Newfoundland and Labrador. By embedding farmer experience directly into the research cycle, the NL-LL ensures that innovations are both practical and impactful.

A live RealAg Radio panel featuring Peter “Wheat Pete” Johnson, Dr. David Burton, and Shelly Woodworth explored the complexities of nitrogen efficiency, including soil variability, crop selection, manure differences, and the influence of weather. Dr. Burton emphasized that many producers continue applying enhanced efficiency products at traditional rates, underscoring the importance of the NL-LL’s research on nitrogen use efficiency. The event also featured keynote speaker Ben Hartman, who introduced his Lean Farm model, offering strategies to reduce waste, improve operational efficiency, and strengthen climate-smart profitability.



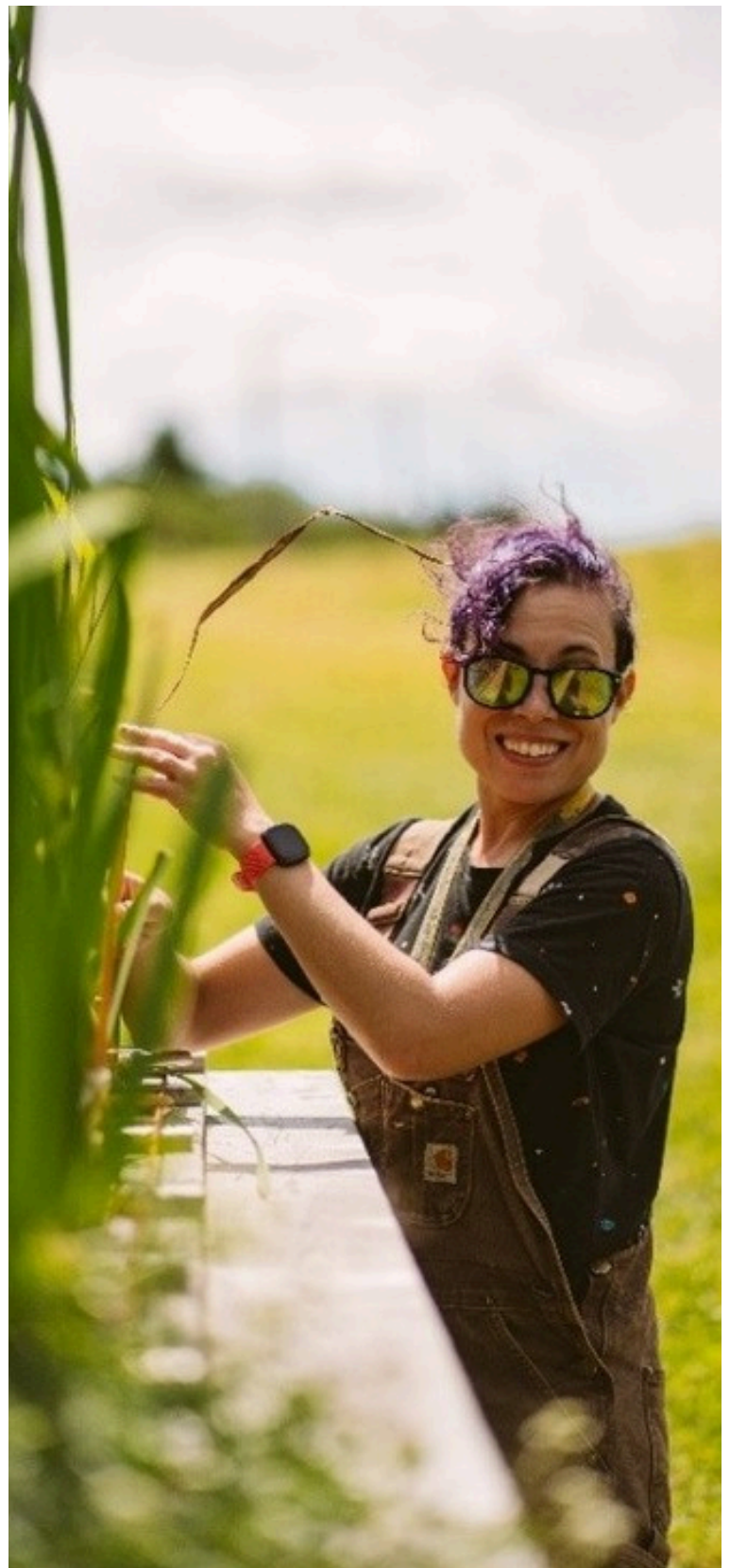
**REALAG RADIO'S SHAUN HANEY HOSTS PANEL FEATURING PETER “WHEAT PETE” JOHNSON, SHELLY WOODWORTH AND DR. DAVID BURTON.**



## Strengthening Partnerships and Expanding Research

Relationship building remained a central theme, highlighted by a roundtable discussion facilitated by Rosalie Gillis Madden of Farmers for Climate Solutions. Participants identified priorities related to soil health, water management, ecological services, policy development, and precision agriculture. The session reinforced the value of collaboration and collective action, reflecting the NL-LL's core philosophy that long term progress depends on strong partnerships and shared expertise. These insights will help guide future climate change initiatives aligned with NL-LL goals.

As the year progressed, the NL-LL expanded its research activities and engagement across the province. A major initiative—informally dubbed “The Year of the Potato”—focused on evaluating whether a 75 percent nitrogen fertilizer blend could maintain yields comparable to conventional recommendations. The fertilizer recommendations for NL are based on those in other Atlantic provinces rather than specifically developed for conditions in NL. Because conditions in NL, including lower expected yields for a variety of reasons, are different than in other parts of Atlantic Canada, these recommendations may be too high. Five new farmers, along with the Gov NL Pynn's Brook research site, joined the strip trial, contributing to a growing network of producers committed to improving nitrogen efficiency. The NL-LL team provided ongoing support throughout the growing season, strengthening relationships and ensuring that research outcomes reflect real world farm conditions.



**AGRICULTURE AND AGRI-FOOD CANADA  
RESEARCHER DR. LINDA JEWELL, EXAMINING  
PLANTS FOR SYMPTOMS OF DISEASE**



# Sharing Knowledge and Showcasing Local Solutions

Later in the year, the NL-LL hosted additional learning opportunities, including a Nitrogen Management Workshop at O'Brien Farm in St. John's. Farmer Curtis Jennings shared results from his cover crop and soil fertility trials aimed at reducing nitrogen use and improving soil health. Agriculture and Agri-Food Canada researchers Dr. Linda Jewell and Dr. Tobias Laengle presented findings from the 2025 field season, including updates on potato fertility strip trials from the Avalon Region. In Labrador, a Lunch and Learn at the Pye Centre for Northern Boreal Food Systems showcased research on biochar, compost, and greenhouse gas measurement techniques, highlighting the importance of locally informed solutions for northern producers



**AAFC RESEARCHERS DEMONSTRATE HOW GREENHOUSE GASES ARE COLLECTED AT THE PYE CENTRE ON JULY 16.**



**CLIMATE CHANGE MANAGER RODNEY REID AT IFALL 2025 FORUM IN BORDEAUX, FRANCE.**

The NL-LL also represented the province internationally at the IFALL 2025 Forum in Bordeaux, France. Climate Change Manager Rodney Reid emphasized that the Living Lab model succeeds because it is rooted in real farms, real challenges, and real partnerships. Discussions at the forum focused on building resilient agroecosystems, accelerating the adoption of climate-smart practices, and strengthening global collaboration. These farmer-led innovations are expected to enhance soil health, reduce greenhouse gas emissions, and improve productivity while supporting regional priorities.

In conclusion, the progress achieved this year would not have been possible without the dedication and leadership of the farmers who opened their fields, shared their knowledge, and actively participated in NL-LL research.

We also extend our sincere appreciation to our partners across government, academia, and industry whose collaboration continues to strengthen the foundation of climate-smart agriculture in Newfoundland and Labrador. Together, we are building a more resilient and sustainable future for the province's agricultural sector. To stay connected with ongoing research, events, and opportunities, visit [www.acsnl.ca](http://www.acsnl.ca).

# ON FARM CLIMATE ACTION FUND

## First Year/ Project Initiation

The On-Farm Climate Action Fund (OFCAF) is a national initiative supported by Agriculture and Agri-Food Canada, established to encourage the adoption of Beneficial Management Practices (BMPs). In 2025, administration of OFCAF-NL within Newfoundland and Labrador was assumed by the Agricultural Climate Solutions (ACS-NL) team of the Newfoundland and Labrador Federation of Agriculture (NLFA), succeeding Perennia of Nova Scotia. The new phase was announced at the Agriculture Industry Symposium in St. John's by the Honourable Joanne Thompson.

OFCAF-NL primarily provides financial assistance to farmers implementing BMPs in three critical areas: nitrogen management, cover cropping, and rotational grazing. This funding is intended to improve agricultural productivity, reduce greenhouse gas emissions, and promote carbon sequestration. The program's launch in Newfoundland and Labrador in 2025 prioritized increasing awareness among farmers and stakeholders through various outreach initiatives focused on educating growers about program details and effective implementation strategies.

1. How to apply for OFCAF program (Jul 30 & Aug 13)
2. Community Pasture Walks & Producer Connect visits (H2 2025)
3. Nitrogen Management Workshop (Nov 07)
4. Climate-Smart Grazing (Nov 08)



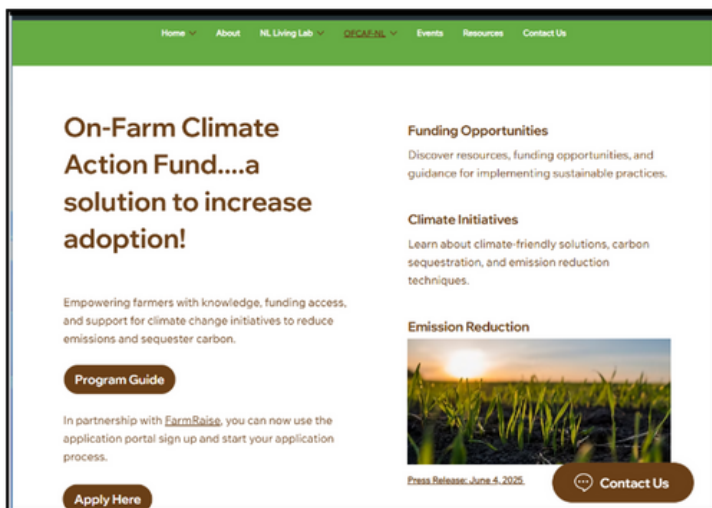
**THE HONOURABLE GERRY BYRNE, THE HON. JOANNE THOMPSON, NLFA PRESIDENT WAYNE SIMMONS AND NLFA CLIMATE CHANGE MANAGER RODNEY REID AT THE OFCAF ANNOUNCEMENT IN ST. JOHN'S IN JANUARY 2025**

# Program Infrastructure Development: Website, Applicant Portal, and Team Expansion

To support the successful launch of OFCAF-NL in 2025, the ACS-NL team invested heavily in building the digital and organizational infrastructure required for efficient program delivery. A dedicated OFCAF-NL section was launched on the ACS-NL website, providing growers with centralized access to program information, funding opportunities, climate-smart resources, and events planned for knowledge technology transfer. This online hub has become a key tool for outreach, transparency, and ongoing communication with producers across the province. Farmers can speak with staff directly through the chat feature of the website to ask questions.

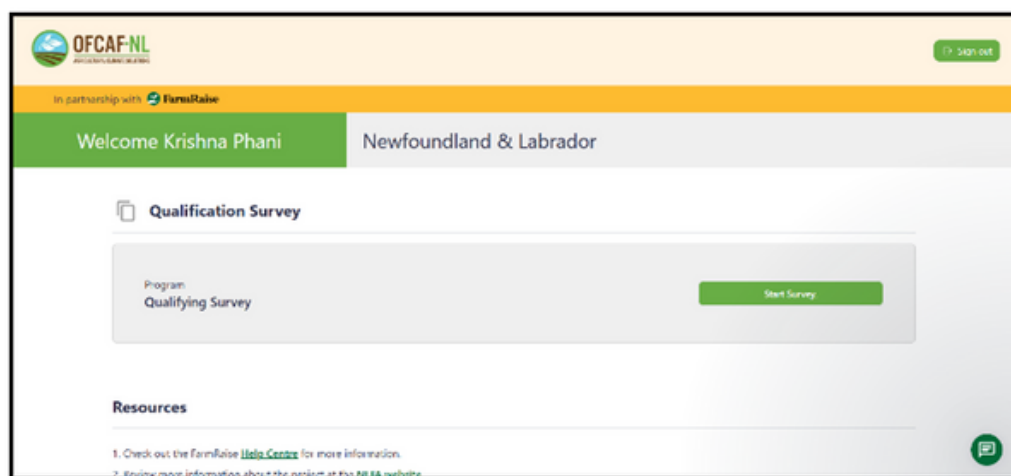
To meet the increased demand for program support and ensure high quality service delivery, ACS-NL expanded its staffing capacity. New team members were added to assist with producer outreach, application review, technical support, and program administration. This strengthened team structure enabled ACS-NL to respond promptly to producer inquiries, deliver more on-farm support, and maintain the high standards expected of a national climate action program.

The OFCAF-NL applicant portal, developed in partnership with FarmRaise was also added. The portal allows producers to create accounts, submit applications, upload supporting documentation, and track the status of their submissions in real time.



This system significantly streamlined the intake process and improved the overall applicant experience by reducing administrative burden and ensuring timely communication.

Two webinar sessions were held to inform growers and local agricultural experts about the On-Farm Climate Action Fund-NL (OFCAF-NL). These sessions provided detailed explanations of program priorities, eligibility criteria, an introduction to the OFCAF-NL program guide, and instructions on navigating the online application system. The webinars were instrumental in supporting growers' understanding of both the program and the application suite, which allows applicants to track the status of their submissions. Participants were also given the opportunity to ask questions regarding any aspects of the program guide that required clarification.







**WINDY HEIGHTS FARM: A CONVERSATION ON MANURE MANAGEMENT, BALE GRAZING AND SOIL ORGANIC MATTER.**

## On-Farm Climate Learning: Pasture Walks, Workshops & Demonstrations

During the latter half of 2025, Rodney Reid, Climate Change Manager, and Krishna Kaja, OFCAF-NL Technical Manager, conducted an extensive tour of the island, engaging with directly with producers at farms and Ag events, and visiting community pastures. This field visit provided valuable insights into individual operations and challenges faced by local stakeholders. They outlined how OFCAF could be utilized to implement innovative practices aimed at enhancing productivity and reducing greenhouse gas emissions. Key outcomes from the trip included a bale grazing demonstration, collaboration for the establishment of a cover crop demonstration site, and several additional initiatives planned to support local producers through knowledge transfer and on-farm adoption.

On November 7th, the ACS-NL team organized a nitrogen management workshop at the O'Brien Farm Foundation in St. John's, NL. The event

brought together local growers and agricultural professionals. The workshop served as a forum for participants—including growers, AAFC scientists, and Memorial University researchers—to discuss optimal nitrogen management practices and share insights on their respective experiences and benefits. The ACS-NL team also presented information about the On-Farm Climate Action Fund (OFCAF), highlighting available financial support for farmers implementing new practices that promote nitrogen use efficiency and reduce greenhouse gas emissions.

A full day onsite visit was organised for growers and NLFA staff to two distinct farms in the St. John's area. The schedule commenced with a tour of Windy Heights Farm, where participants spent approximately 90 minutes walking through paddocks alongside the farm owner, gaining insights into rotational grazing, soil management, and the role of livestock in land stewardship. This was followed by a lunch-and-learn session focused on indoor mushroom cultivation. In the afternoon, Rock Iron Pasture in Pouch Cove hosted a bale grazing demonstration, supported by OFCAF as part of its knowledge-sharing program. Attendees observed bale grazing on challenging terrain and learned about the benefits of this practice in enhancing soil quality through the addition of organic matter.



# Producer Group Engagement & Sector Outreach

Throughout 2025, ACS-NL prioritized direct engagement with producer organizations, agricultural networks, and regional events to expand awareness of OFCAF-NL and ensure growers across Newfoundland and Labrador had clear, accessible information about the program. These outreach efforts helped connect with a diverse range of producers, from established operations to new entrants exploring climate smart practices.

ACS-NL delivered targeted presentations to several key producer groups, including the NL Cattlemen's Producers Association and Women in Agriculture NL. These sessions provided overviews of OFCAF-NL funding streams, eligibility requirements, and practical examples of how nitrogen management, cover cropping, and rotational grazing could be implemented in local production systems. The interactive format encouraged discussion, allowing producers to ask questions and explore how the program aligned with their operational needs.



**LUNCH AND LEARN AT THE PYE CENTRE, HAPPY VALLEY-GOOSE BAY**

In addition to formal presentations, ACS-NL maintained a strong presence at agricultural expos and regional events throughout the year. Staff provided one-on-one support, demonstrated how to navigate the OFCAF-NL applicant portal, and distributed program materials to ensure producers had the tools needed to participate confidently in the program.

To support producers in Labrador, ACS-NL hosted a dedicated Lunch and Learn session that offered a comprehensive overview of the OFCAF-NL program. Participants received guidance on eligible Beneficial Management Practices, application requirements, and timelines. The session also created space for producers to share regional considerations—such as short growing seasons, soil constraints, and logistical challenges—helping ACS-NL tailor future outreach and support to the unique needs of Labrador's agricultural community.





# AWARDS

## Environmental Award

Congratulations to Marks Market, the 2025 recipient of the Newfoundland and Labrador Federation of Agriculture Environment Award!

The most prestigious environmental and conservation award in the province, the Environmental Award is presented each year to an individual producer or farm group that makes great contributions to sustainable resource management and/or to the prevention of environmental damage on the agricultural landscape in Newfoundland and Labrador.

Mark's Market is a modern farm market based on direct-to-consumer sales, and always expanding its products. A wide range of fruits and vegetables are grown on 36 acres, where Dick actively farms with his wife Arlene, his son Chris and daughter in law Kayla. If you ask them what they grow they grow everything from a to z. (Apple to Zucchini) and have a full line of preserves. Environmentally they implemented a good IPM program, a good fertilizer program and also all non cropping land goes into green manures to help build soil health and decrease weed pressures. They are also proud to have a state of the art irrigation system in place to help with frost protection and help the crops in drier seasons.





# College of the North Atlantic Agriculture Technician Scholarship

To encourage local students to pursue careers in the agri-products industry, NLFA is supporting two scholarships for students in the first and second year of the Agriculture Technician Co-op program at College of the North Atlantic.

Congratulations Brooklyn Foster and Violet Lush!



**CNA INSTRUCTOR SHARON WRIGHT WITH BROOKLYN FOSTER, FIRST-YEAR CNA SCHOLARSHIP RECIPIENT.**

# Elvis Gillam inducted into Atlantic Agricultural Hall of Fame

Elvis began his farming career at the young age of nineteen, establishing Riverbrook Farms, a family-run operation that became a cornerstone of agricultural innovation and local food access in Newfoundland and Labrador.

For over 40 years, Elvis and his family sold fresh produce directly to consumers in Corner Brook, building trusted relationships and a loyal customer base. For 17 of those years, they operated their own Farm Market Building, providing high-quality, locally grown food to the community.

Under Elvis's leadership, Riverbrook Farms pioneered the production of Goldrush russet potatoes in the province—this variety has since become an industry standard. The farm also led the way as the first-row crop farm in Newfoundland and Labrador to implement an irrigation system, enabling the successful cultivation of specialty crops well ahead of their popularity in the region.

Beyond vegetables, Elvis and his family raised over 100 breeding sheep and Black Angus cattle, diversifying his farm's offerings and further supporting the Farm Market's operations.

Elvis cultivated strong partnerships with farms in Nova Scotia's Annapolis Valley, bringing in fruit and other specialty items to enrich the local market. Through decades of demanding physical work and unwavering commitment, he contributed immensely to the food security and economic well-being of his community.

Elvis's dedication extended beyond his farm through numerous civic and agricultural leadership roles. He served eight years with the Local Service District of Bay St. George South, including four years as Chairperson. He also held roles with the Area Development Association, including two years as Chair.



**SOURCE: [WWW.DAL.CA/DIFF/AAHF/INDUCTEES/ELVIS-GILLAM.HTML](http://WWW.DAL.CA/DIFF/AAHF/INDUCTEES/ELVIS-GILLAM.HTML)**

In agriculture, Elvis contributed significantly at the provincial level. He served six years on the board of the Newfoundland and Labrador Federation of Agriculture, including two years as Vice President. His work with the Horticulture Producers Council, Agri-Adapt Council and the Greenhouse Gas Mitigation Program further highlight his forward-thinking approach and commitment to the future of farming.

A lifelong advocate for agriculture, Elvis has devoted his life to building a better, more resilient industry in Newfoundland and Labrador. His legacy is one of innovation, leadership and deep-rooted passion for the land and community he served.



# Outstanding Contribution to Agriculture Award: Frank and Joyce Pye, The Grand River Farm

Frank and Joyce Pye are the 2024 recipients of the Outstanding Contribution Award, in recognition of their lifelong commitment to agriculture in Labrador and their extraordinary impact on food production, innovation, and community building in the region.

Speaking at the 2025 Agriculture Industry Symposium, Shelley Cleary reflected on the Pyes influence in both a personal and professional sense. “When I moved to Goose Bay back in 2002, Frank and Joyce were one of my folks—farmers, friends. I learned a lot from them, and I also learned what agriculture was in Labrador and how important it was,” she said. Frank and Joyce were not only farmers, but mentors, connectors, and champions of Labrador agriculture.

Shelley described them as “two extraordinary individuals who played a pivotal role in shaping the agricultural industry in Labrador,” noting that their “vision, determination, and relentless spirit have left an incredible mark on our region, paving the way for future generations.”

“When others said it couldn’t be done, Frank and Joyce proved them wrong,” Shelley said. “Frank really liked to prove people wrong—anyone that knew Frank knew that well.”

The Pyes began farming commercially in the late 1980s, establishing what became the Grand River Farm in Happy Valley-Goose Bay. Over more than 30 years, they built a successful operation that adapted to Labrador’s harsh climate and unique challenges. “Farming in Labrador is no easy feat,” says Shelley. “Harsh climates, limited resources, and skepticism stood in their way. But Frank and Joyce never took no for an answer.”

Through “sheer hard work and perseverance,” Shelley said, “they cultivated not just the land, but an entire industry. Their belief in Labrador’s agricultural future laid the foundation for the progress we see today.”



Grand River Farm became a beloved community asset, offering fresh produce, pick-your-own strawberries, pumpkin patch hayrides, and opportunities for people to connect with local food. The Pyes also played an important role in establishing the Community Outdoor Market and were long-time members of the Lake Melville Agricultural Association.

Frank passed in 2017, but Joyce continued to play an important role in ensuring their work would endure. “Because of their dedication, agriculture in Labrador is stronger than ever,” Shelley noted. “Their tireless efforts inspired generations of farmers and food producers, showing that with passion and resilience, anything is possible.”

In 2019, Memorial University acquired the lease of the former Grand River Farm and established the Pye Centre for Northern Boreal Food Systems. The Centre now carries forward the Pyes’ legacy of food innovation, sustainability, and community connection. “Their legacy lives on through the Pye Centre,” Shelley said, “which continues to foster growth, innovation, and sustainability in agriculture across Labrador.”

As Shelley concluded in her remarks, “The seeds they planted—both in the soil and in the hearts of those they inspired—will continue to flourish for years to come.”

# ATLANTIC HALL OF FAME

## INDUCTEES:

2024	Stewart King
2023	Peter Noer
2022	Wallace Skinner
2021	Gerard Comier
2020	Raymond Eveleigh
2019	Hector Williams
2018	Ron Taylor
2017	Richard Oram
2016	Paul Lomond
2015	Mervin Wiseman
2014	Ross Traverse
2013	Leonard Ruby
2012	Mary Lester
2011	Melvin Rideout
2010	Michael Bland
2009	Rhonda Thornley
2008	Eugene Legge
2007	Rick Woodford
2006	Walter Fiander
2005	Howard Morry
2004	Martin Howlett
2003	Cecil Howse
2002	Aubrey Ellsworth
2001	Eric Williams
2000	Thomas Brown
1999	Wilson Chaffey
1998	Leo Cormier
1997	Scott Simmons
1996	Robert Peddle
1995	Kenneth Proudfoot
1994	Juanita Lesta
1993	Hollis Duffett
1992	Francis McDonald
1991	Fred Wells
1990	Michael Ryan
1989	Thomas Lester
1988	Colin Bull
1987	Joseph Moore
1986	Alton Smith
1985	Raymond Morris
1984	Robert Chancey
1983	Clarence Badcock
1982	Dan Gillis
1980	Rupert Wood

# ENVIRONMENTAL AWARD

## RECIPIENTS:

2024	Green Farms Innovations Inc.
2023	Nemori Farms Ltd.
2022	Warren's Farm
2021	Jeff and Connie Peddle
2020	Countryside Abattoir
2019	Riverbend Dairy
2018	Sunrise Dairy Ltd.
2017	The Natural Gardener
2016	Triple E Farms
2015	Art Gill
2014	Beautyview Farms
2013	Smallwood Group
2012	Headline Holsteins
2011	Munn Poultry
2010	Burnt Hill Farm
2009	Service Master Lawn Care
2008	Service Master Lawn Care
2007	Campbellton Berry Farm
2006	Rowsells Farm
2005	Rabinowitz Organic Farm
2004	River Brook Farms

# OUTSTANDING CONTRIBUTION AWARD

## RECIPIENTS:

2023	The Honourable Derrick Bragg
2022	Pauline Duivenvoorden
2021	Melvin Rideout Sr.
2020	Rhonda Thornley
2019	Joseph R. Smallwood
2018	Roosevelt Thompson
2017	Bob Aylward
2016	Eugene Legge
2015	Mary Lester
2014	Hector Williams
2013	Howard Morry Sr.



## CONTACT



709-747-4874



nlfa.ca



info@nlfa.ca



/nlfarms



@nl\_farms



/company/nlfarms

## WEST COAST OFFICE

4 Herald Ave, Suite 504  
Corner Brook, NL  
A2H 4B4

## EAST COAST OFFICE

Dorset Building, Suite 106  
6 Mount Carson Ave.,  
Mount Pearl, NL A1N 3K4

